

2014 - 2015 Report Card for Kenston Intermediate School

SCHOOL GRADE

Coming in
2018



Achievement

This grade combines two results for students who took the state tests. The first result answers the question – How many students passed the state test? The second result answers the question – How well did students do on the state test?

Performance Index	73.6%.....	C
Indicators Met	85.7%.....	B

[2015 Modified Achievement Measure](#)

COMPONENT GRADE

Coming in
2016



Progress

This is your school's average progress for its students in math and reading, grades 4-8. It looks at how much each student learns in a year. Did the students get a year's worth of growth? Did they get more? Did they get less?

Value Added	Overall.....	A
Gifted.....		A
Students with Disabilities.....		C
Lowest 20% in Achievement.....		C

COMPONENT GRADE

Coming in
2016



Gap Closing

This grade shows how well all students are doing in your district in reading, math, and graduation. It answers the question – Is every student succeeding, regardless of income, race, ethnicity, or disability?

Annual Measurable Objectives	52.5%.....	F
------------------------------	------------	---

[2015 AMO Download File](#)

COMPONENT GRADE

Coming in
2016



Graduation Rate

This grade answers the question – How many ninth graders graduate in four years or five years?

Graduation Rates
This school is not evaluated for graduation rate because there are not enough students in the graduating class.

COMPONENT GRADE

Coming in
2016



K-3 Literacy

This grade answers the question – Are more students learning to read in kindergarten through third grade?

K-3 Literacy Improvement	NC.....	NR
--------------------------	---------	----

COMPONENT GRADE

Coming in
2016



Prepared for Success

This grade answers the question – Are students who graduate from your district ready for college or a career? There are many ways to show that graduates are prepared.

COMPONENT GRADE

Coming in
2016

Achievement



This grade combines two results for students who took the state tests. The first result answers the question – How many students passed the state test? The second result answers the question – How well did students do on the state test?

COMPONENT GRADE

Coming in
2016

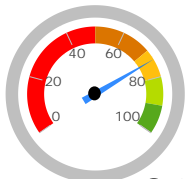
GRADE

C

Performance Index

The Performance Index measures the test results of every student, not just those who score proficient or higher. There are six levels on the index and districts receive points for every student in each of these levels. The higher the achievement level the more the points awarded in the district's index. This rewards schools and districts for improving the performance of all students, regardless of achievement level.

Performance Index

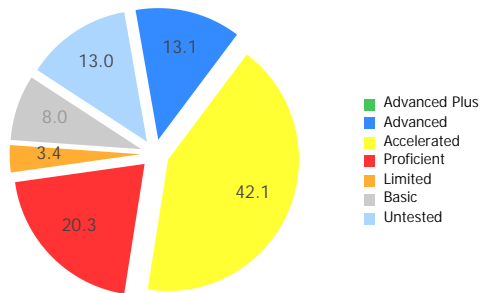


73.6%

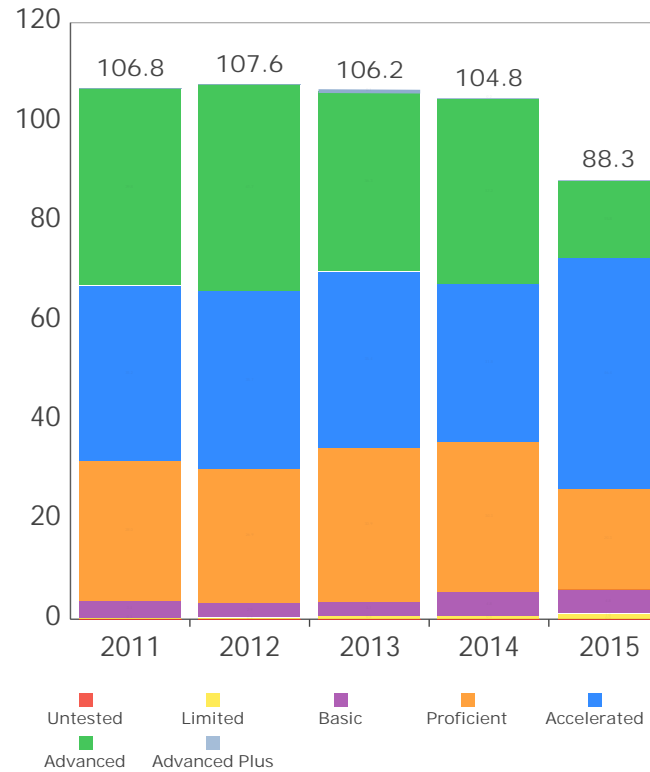
88.3 of a possible 120.0

- A = 90.0 - 100.0%
- B = 80.0 - 89.9%
- C = 70.0 - 79.9%
- D = 50.0 - 69.9%
- F = 0.0 - 49.9%

Achievement Level	Pct of Students		Points for this Level	=	Points Received
Advanced Plus	0.0	x	1.3	=	0.0
Advanced	13.1	x	1.2	=	15.8
Accelerated	42.1	x	1.1	=	46.4
Proficient	20.3	x	1.0	=	20.3
Basic	8.0	x	0.6	=	4.8
Limited	3.4	x	0.3	=	1.0
Untested	13.0	x	0.0	=	0.0
				=	88.3



Performance Index Trend



GRADE
B

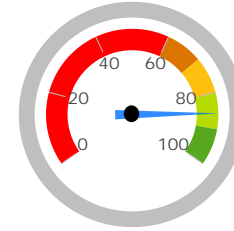
Indicators Met

Indicators Met measures the percent of students who have passed state tests. It also includes the gifted indicator. Test results are reported for each student in a grade and subject.

Indicators Met %

85.7%
6 out of 7

- A = 90.0 - 100.0%
- B = 80.0 - 89.9%
- C = 70.0 - 79.9%
- D = 50.0 - 69.9%
- F = 0.0 - 49.9%



Grades 3-5

3rd Grade	Mathematics	NC	
	Reading	NC	
4th Grade	Mathematics	76.1%	✓
	Reading	91.6%	✓
	Social Studies	88.6%	✓
5th Grade	Mathematics	88.8%	✓
	Reading	93.0%	✓
	Science	82.4%	✓

Grades 6-8

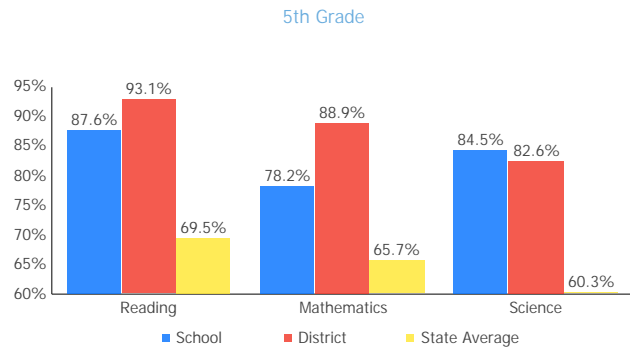
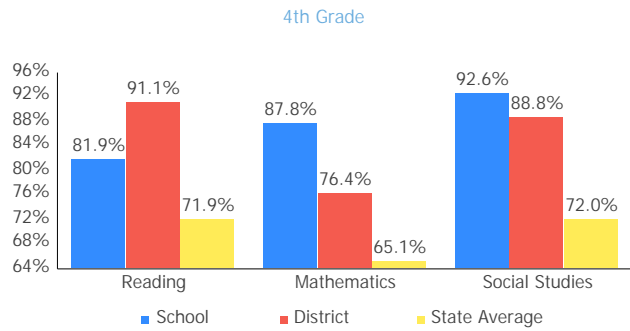
This school does not have enough test results in 6th, 7th, or 8th grade to display this table.

Ohio Graduation Test

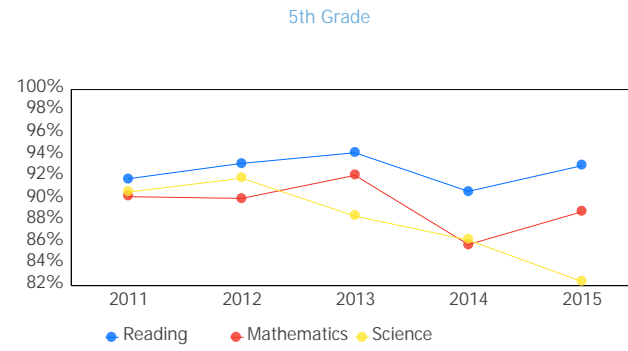
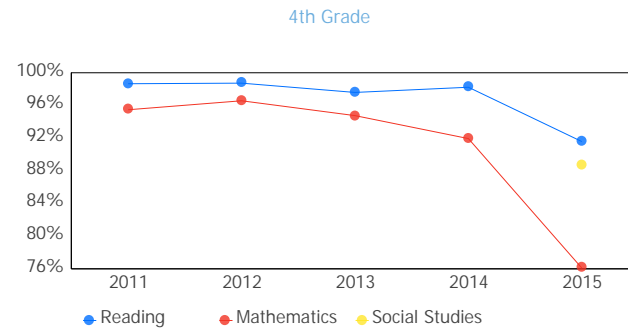
This school does not have enough Ohio Graduation Test results to display this table.

GIFTED INDICATOR **X**

Achievement Levels by Grade



Proficient Percent Trend by Grade



6th Grade

No data returned for this view. This might be because the applied filter excludes all data.

6th Grade

No data returned for this view. This might be because the applied filter excludes all data.

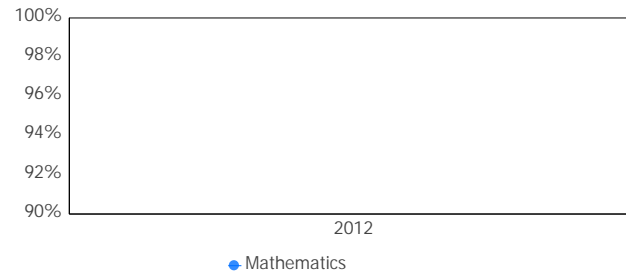
7th Grade

7th Grade

No data returned for this view. This might be because the applied filter excludes all data.

8th Grade

No data returned for this view. This might be because the applied filter excludes all data.



8th Grade

No data returned for this view. This might be because the applied filter excludes all data.

10th Grade OGT

No data returned for this view. This might be because the applied filter excludes all data.

10th Grade OGT

No data returned for this view. This might be because the applied filter excludes all data.

11th Grade Cumulative OGT

11th Grade Cumulative OGT

No data returned for this view. This might be because the applied filter excludes all data.

No data returned for this view. This might be because the applied filter excludes all data.

Gifted Students



The Gifted Students data and Indicator highlight the opportunities for and performance of gifted students. The dashboard answers several questions: How many students are identified as gifted and in what categories? How many of those students are receiving gifted services? How well are those gifted students performing? The Gifted Indicator measures whether opportunity and performance expectations are being met for gifted students.

INDICATOR

Not Met

Overview

The Gifted Indicator is derived from three components: Gifted Value Added grade, the Performance Index for gifted students, and a Gifted Inputs score.

Gifted Value Added

Value Added Grade:	A	Schools must earn a Gifted Value Added grade of C or better to meet the Gifted Value Added component.
Value Added Met?:	Met	

Gifted Performance Index

Performance Index:	98.692	Schools with at least 10 unique students in the Gifted Performance Index calculation must score 115.0 or better to meet the Gifted Performance Index component.
Performance Index Met?:	Not Met	

Gifted Inputs

Total Points:	69.0	Points are earned based on identification and services provided to gifted students. Schools must earn 40 or more points out of a possible 100 to meet the Gifted Inputs component.
Gifted Inputs Met?:	Met	

Gifted Indicator Final Result

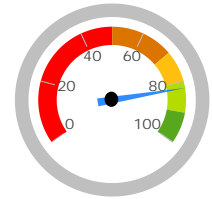
INDICATOR

Not Met

The Gifted Indicator is Met if none of the three components are Not Met. Gifted Inputs alone cannot determine the Gifted Indicator, however; if both the Value Added and Performance Index components are NC, then the Gifted Indicator is also NC.

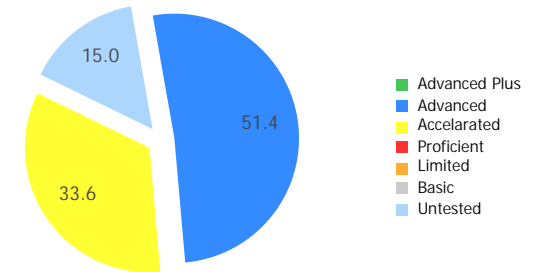
Performance Index

The Performance Index calculation for gifted students. Only tests taken by students identified as gifted in that subject (e.g. gifted in Math and taking the Math test), or taken by students identified with Super Cognitive abilities regardless of test subject are included.



- A = 90.0 - 100.0%
- B = 80.0 - 89.9%
- C = 70.0 - 79.9%
- D = 50.0 - 69.9%
- F = 0.0 - 49.9%

Achievement Level	Pct of Students		Points for this Level	=	Points Received
Advanced Plus	0.0	x	1.3	=	0.0
Advanced	51.4	x	1.2	=	61.7
Accelerated	33.6	x	1.1	=	37.0
Proficient	0.0	x	1.0	=	0.0
Basic	0.0	x	0.6	=	0.0
Limited	0.0	x	0.3	=	0.0
Untested	15.0	x	0.0	=	0.0
					98.692

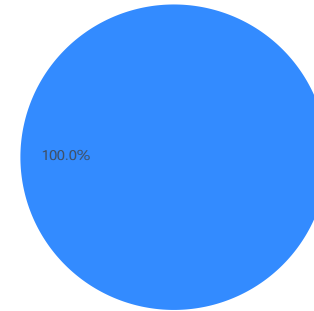
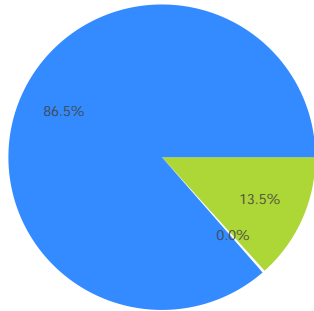


Gifted Indicator

The Gifted Inputs calculation assigns points based on the percentage of students identified and served in eight categories (factors). The points earned for each category are totaled to determine the final Met/Not Met determination for the Gifted Input component.

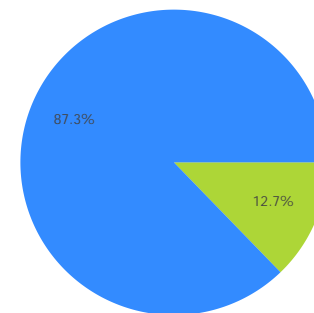
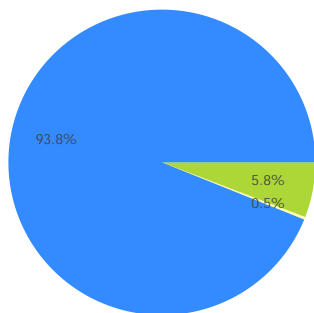
Reading, Math, Science, Social Studies, and Superior Cognitive Abilities

Visual/Performing Arts and Creative Thinking



Disadvantaged Students

Minority Students



■ Receiving Gifted Services

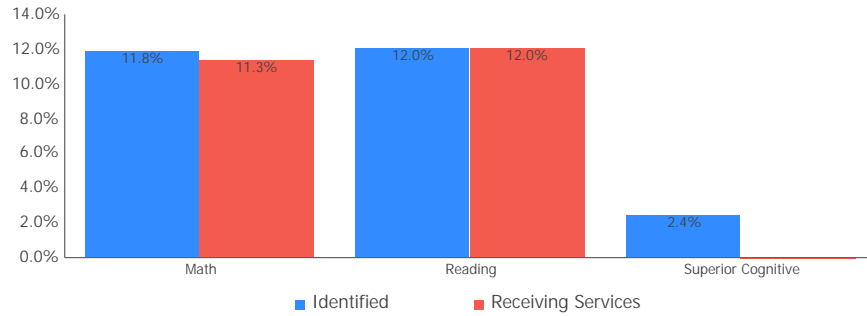
■ Identified as Gifted, but not receiving services

■ Not Identified as Gifted

Identification and Receiving Services

These charts show the percentage of enrolled students that are identified as gifted and that are receiving gifted services.

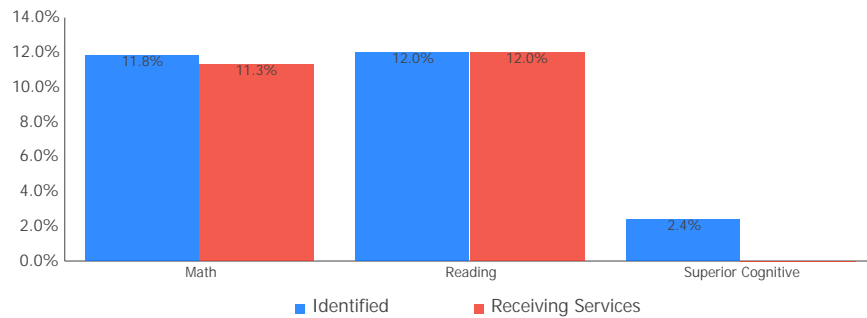
All Grades



Grades K-3

This chart cannot be displayed because there were not enough students to evaluate.

Grades 4-8



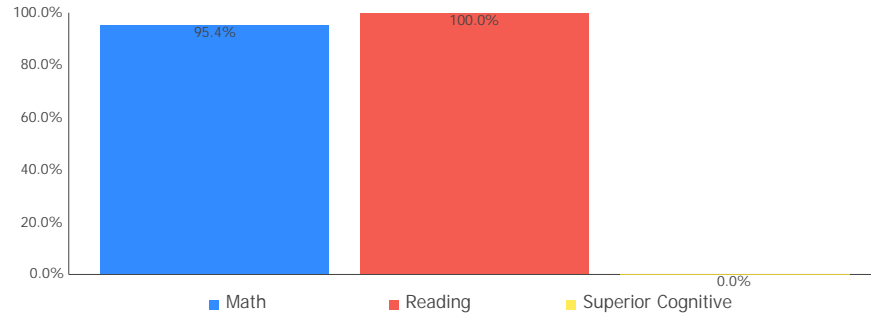
Grades 9-12

This chart cannot be displayed because there were not enough students to evaluate.

Identified and Receiving Services

These charts show, of the students identified as gifted, the percentage of students receiving gifted services.

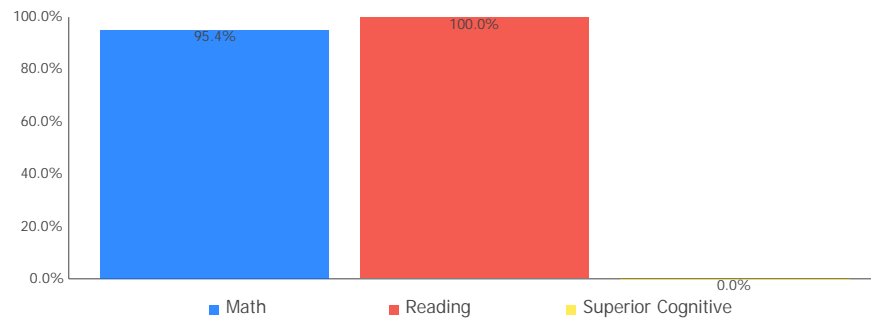
All Grades



Grades K-3

This chart cannot be displayed because there were not enough students to evaluate.

Grades 4-8



Grades 9-12

This chart cannot be displayed because there were not enough students to evaluate.

Progress



This is your school's average progress for its students in math and reading, grades 4-8. It looks at how much each student learns in a year. It answers the question – Did the students get a year's worth of growth? Did they get more? Did they get less?

COMPONENT GRADE
Coming in
2016

GRADE	Overall
A	This measures the progress for all students in math and reading, grades 4-8.
GRADE	Gifted Students
A	This measures the progress for students identified as gifted in reading, math, and/or superior cognitive ability.
GRADE	Students in the Lowest 20% in Achievement
C	This measures the progress for students identified as the lowest 20% statewide in reading and math achievement.
GRADE	Students with Disabilities
C	This measures the progress for students with disabilities.
GRADE	High School
Coming in 2018	A High School measure of progress will be reported in the 2014-15 school year.

Progress Details

This table shows the Progress scores by test grade and subject, and includes up to three years of data as available.

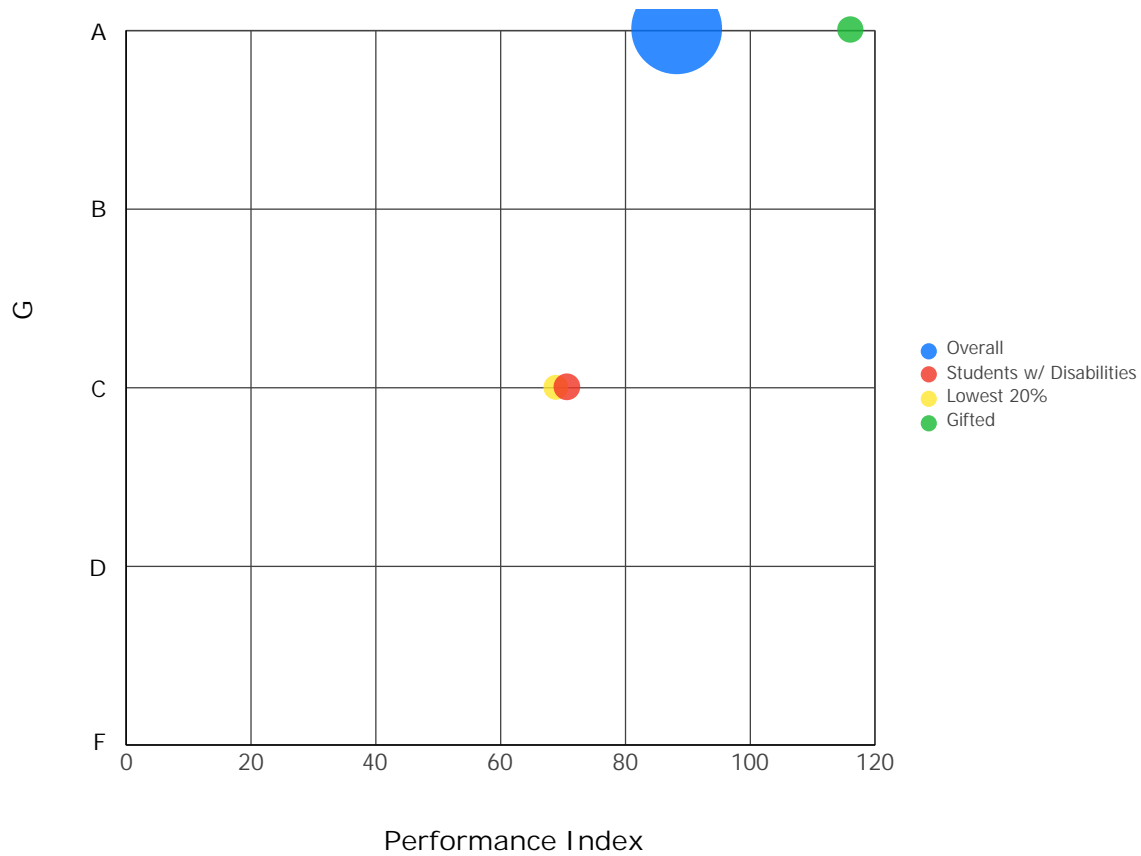
Test Grade	Progress Score		
	English Language Arts	Mathematics	All Tests
All Grades	10.68	6.76	11.53
4th Grade	8.42	-1.29	5.00
5th Grade	6.81	10.63	11.05

Although Progress scores are not assigned letter grades at this level of detail, the grading scale applied at the Overall (All Students, All Tests) level is:

A = 2.00 and up
B = 1.00 to 1.99
C = -1.00 to 0.99
D = -2.00 to -1.01
F = below -2.00

Progress vs. Performance Index

This bubble chart shows the relationship between each subgroup's Performance Index results (horizontal axis) to the Value-Added letter grade (vertical axis). The size of the bubble represents the size of the student subgroup.



Gap Closing



This grade shows how well all students are doing in your district in reading, math, and graduation. It answers the question – Is every student succeeding, regardless of income, race, ethnicity, or disability?

COMPONENT GRADE

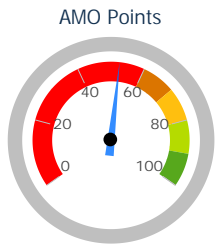
Coming in
2016

GRADE

F

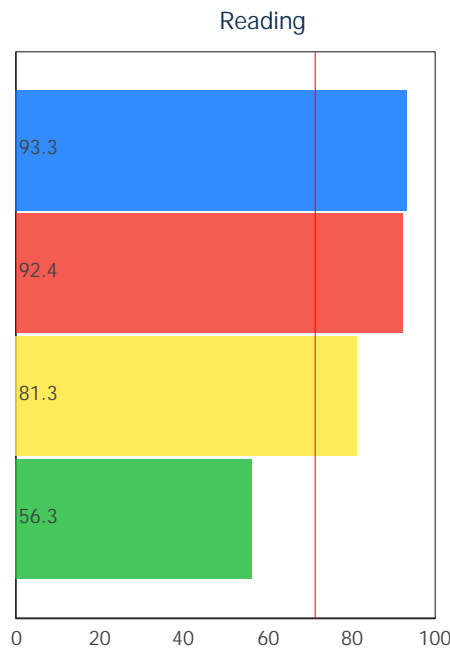
Annual Measurable Objectives

Annual Measurable Objectives (AMOs) compare the performance of student groups to a state goal which is displayed as the red line in the following charts. These charts show how well each group achieves that goal in reading, math and graduation – and emphasize any achievement gaps that exist between groups. The ultimate goal is for all groups to achieve at high levels.

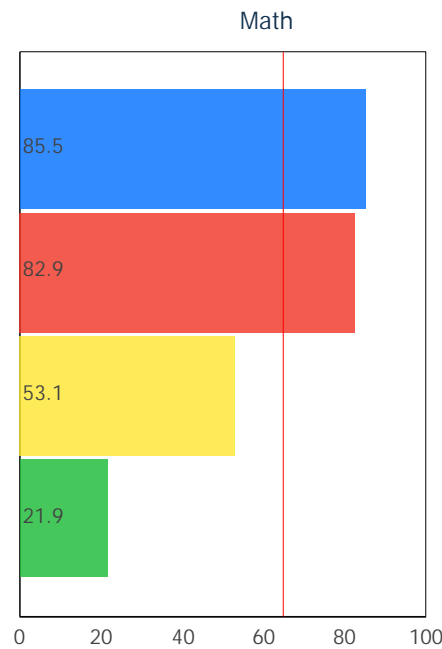


52.5%

- A = 90.0 - 100.0%
- B = 80.0 - 89.9%
- C = 70.0 - 79.9%
- D = 60.0 - 69.9%
- F = 0.0 - 59.9%



White All Students
Econ Disadvantage Students w/ Disab...



White All Students
Econ Disadvantage Students w/ Disab...

Graduation Rate

This school does not have an Annual Measurable Objective for Graduation Rate because there were not enough students to evaluate.

The red line on each graph identifies the Annual Measurable Objective. The 2015 AMO for Reading is 71.3%, for Math is 65.0%, and for Graduation Rate is 80.5%. Subgroups with fewer than 30 students are not rated and do not appear on the graphs.

Graduation Rate



This grade represents the percentage of students whom entered the 9th grade and graduated 4 and 5 years later.



This school has not been assigned a grade for Graduation Rate because there were not enough students to evaluate.

The Graduation Rate graph that would appear in this space cannot be displayed because there were not enough students to evaluate.

K-3 Literacy



This grade answers the question - Are more students learning to read in kindergarten through third grade?

COMPONENT GRADE

Coming in
2016

GRADE

NR

K-3 Literacy
Improvement

This data is not displayed because there are not enough students to evaluate.

In Your School...

K-3 Literacy was not calculated for this school because there were not enough students to evaluate.

Details of Measure

Not On-Track at Point A			Improving to On-Track at Point B	
Kindergarten Reading Diagnostic, School Year 2013 - 2014	< 10	to	1st Grade Reading Diagnostic, School Year 2014 - 2015	< 10
1st Grade Reading Diagnostic, School Year 2013 - 2014	< 10	to	2nd Grade Reading Diagnostic, School Year 2014 - 2015	< 10
2nd Grade Reading Diagnostic, School Year 2013 - 2014	< 10	to	3rd Grade Reading Diagnostic, School Year 2014 - 2015	< 10
3rd Grade Reading Diagnostic, School Year 2014 - 2015	< 10	to	3rd Grade Reading OAA, School Year 2014 - 2015	< 10
Deduction for 3rd graders who did not pass OAA and were not on a Reading Improvement and Monitoring Plan				< 10
Totals				< 10

Percentage On-Track in Reading Diagnostic

K-3 Literacy was not calculated for this school because there were not enough students to evaluate.

Third Grade Reading Guarantee

Ohio's Third Grade Reading Guarantee ensures that students are successful in reading before moving on to fourth grade. Schools must provide supports for struggling readers in early grades. If a child appears to be falling behind in reading, the school will immediately start a Reading Improvement and Monitoring Plan. The program ensures that every struggling reader gets the support he or she needs to learn and achieve.

Students have multiple opportunities to meet promotion requirements including meeting a minimum promotion score on the third grade state reading tests given in the fall and spring. Students have an additional opportunity to take the state assessment in the summer, as well as a district-determined alternative assessment.

The Parent Roadmap is available to help parents understand how the Third Grade Reading Guarantee applies to your child.

How many third graders met the Third Grade Reading Guarantee requirements for promotion to 4th grade? NC

How many third graders scored proficient on the state Reading test? NC

Prepared for Success



This grade answers the question – Are students who graduate from your school ready for college or a career? There are many ways to show that graduates are prepared.

COMPONENT GRADE

Coming in
2016

How Prepared was Your 2014 Graduating Class?

ACT: Participation

ACT: Remediation
Free

SAT: Participation

SAT: Remediation
Free

Honors Diploma

Industry-Recognized
Credential

Advanced Placement:
Participation

AP: Exam Score of 3
or Better

Dual Enrollment
Credit

International
Baccalaureate

IB: Exam Score of 4
or Better

This data cannot be shown because there are not enough students in the graduating class of 2014 to evaluate.

Outcomes after High School Graduation

Districts and schools have long-term impacts on student outcomes. The Prepared for Success component provides information on how schools prepare students for different pathways of college and career success. It also provides insights on how those students do once they leave high school. What happens beyond the diploma is an important indicator of how well schools are preparing students.

The University System of Ohio provides [district reports](#) on enrollment and remediation of high school graduates attending in-state, public colleges and universities.

What Percentage of the 2012 Graduating Class Entered College within Two Years? NC

This graph is not displayed because the result is Not Calculated.

Note: These data represent students in the 4-year graduation rate, i.e. students who entered 9th grade in 2011.



Principal: Adam J. Fender
 Address: 17419 Snyder Rd
 Chagrin Falls OH 44023-2730

Phone: (440) 543-9722

Directory information current as of the 2014-2015 Report Card publication date.

Your School's Students

Average Daily Enrollment:

416

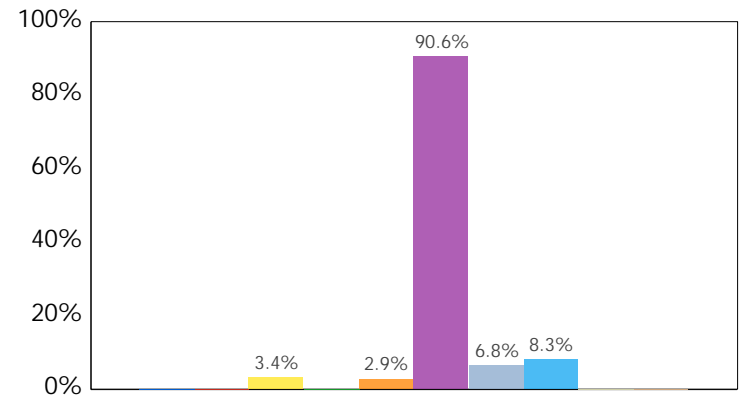
Number of Limited English Proficiency Students Excluded from Accountability Calculations:

--

Enrollment by Subgroup

	Enrollment #	Enrollment %
Am. Indian / Alaskan Native	NC	
Asian or Pacific Islander	NC	
Black, Non-Hispanic	14	3.4%
Hispanic	NC	
Multiracial	12	2.9%
White, Non-Hispanic	377	90.6%
Students with Disabilities	28	6.8%
Economically Disadvantaged	35	8.3%
Limited English Proficiency	NC	
Migrant	NC	

NC = Not Calculated because there are fewer than 10 in the group



- American Indian or Alaska...
- Asian or Pacific Islander
- Black, Non-Hispanic
- Hispanic
- Multiracial
- White, Non-Hispanic
- Students with Disabilities
- Economic Disadvantage
- Limited English Proficiency
- Migrant

State and federal law require an annual assessment of Limited English Proficient (LEP) students to measure their English language proficiency. The Ohio Test of English Language Acquisition (OTELA) is the assessment used in Ohio to gauge LEP students' growth in learning English. For information about your district's OTELA results, see the Department of Education's web site at <http://education.ohio.gov>.

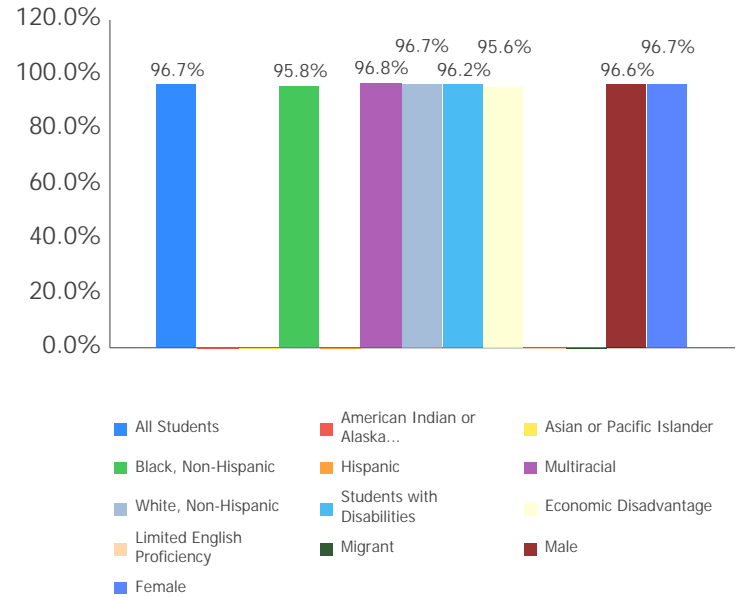
Attendance Rate

Chronic Absenteeism Rate:

1.7%

All Students	96.7%
Am. Indian / Alaskan Native	NC
Asian or Pacific Islander	NC
Black, Non-Hispanic	95.8%
Hispanic	NC
Multiracial	96.8%
White, Non-Hispanic	96.7%
Students with Disabilities	96.2%
Economic Disadvantage	95.6%
Limited English Proficiency	NC
Migrant	NC
Male	96.6%
Female	96.7%

NC = Not Calculated because there are fewer than 10 in the group

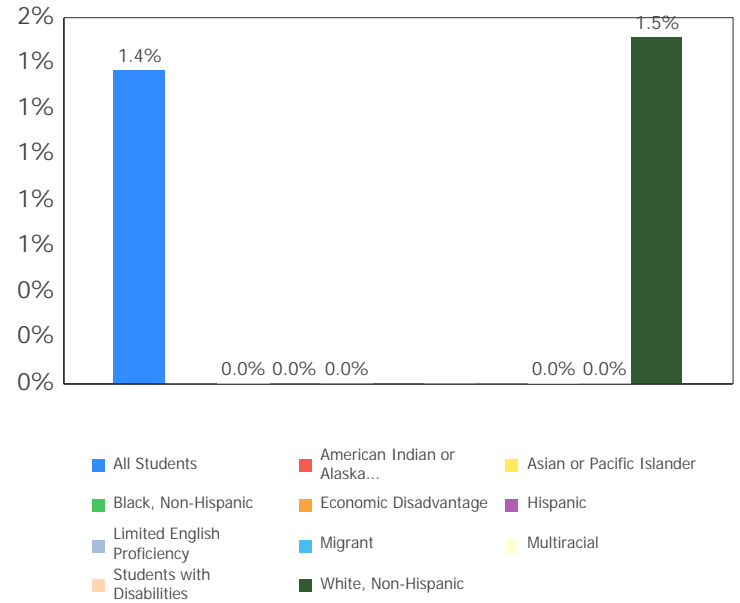


Attendance Rate is not shown if enrollment is less than 10.

Mobility Rates by Subgroup

	Student Mobility %
All Students	1.4%
Am. Indian / Alaskan Native	NC
Asian or Pacific Islander	0.0%
Black, Non-Hispanic	0.0%
Hispanic	NC
Multiracial	0.0%
White, Non-Hispanic	1.5%
Students with Disabilities	0.0%
Economically Disadvantaged	0.0%
Limited English Proficiency	NC
Migrant	NC

NC = Not Calculated because there are fewer than 10 in the group



This chart shows the percentage of students who, because they moved into or out of the district, did not spend a majority of the school year within the district.

Your School's Teachers

Your School's Poverty Status: Low	Your School	Your District
Percentage of teachers with at least a Bachelor's Degree	100.0	100.0
Percentage of teachers with at least a Master's Degree	84.4	80.6
Percentage of core academic subject and elementary classes not taught by Highly Qualified Teachers	0	0
Percentage of core academic subject and elementary classes taught by properly certified teachers	100	99.4
Percentage of core academic subject elementary and secondary classes taught by teachers with temporary, conditional or long-term substitute certification/licensure	0	0
Lead or Senior Teachers:	0.0	0.0

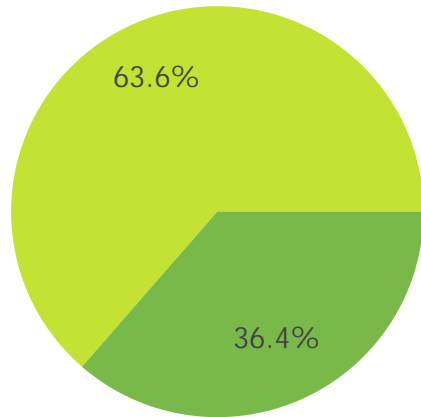
Number of Teachers by Program Area

General Education	15.8
Gifted and Talented	1.0
Career-Technical Programs	0.0
Art Education K-8	0.0
Music Education K-8	1.0
Physical Education K-8	1.0
ELL Instructional Program	0.0
Special Education	4.7

A district's high-poverty schools are those ranked in the top quartile based on the percentage of economically disadvantaged students. Low-poverty schools are those ranked in the bottom quartile based on the percentage of economically disadvantaged students. A district may have buildings in both quartiles, in just one quartile or in neither quartile.

NC = Not Calculated because there are fewer than 10 in the group

Teacher Evaluations



- Skilled
- Accomplished
- Developing
- Ineffective
- Not Complete

Wellness and Physical Education

The extent to which students are successful in meeting the benchmarks contained in Ohio's physical education standards

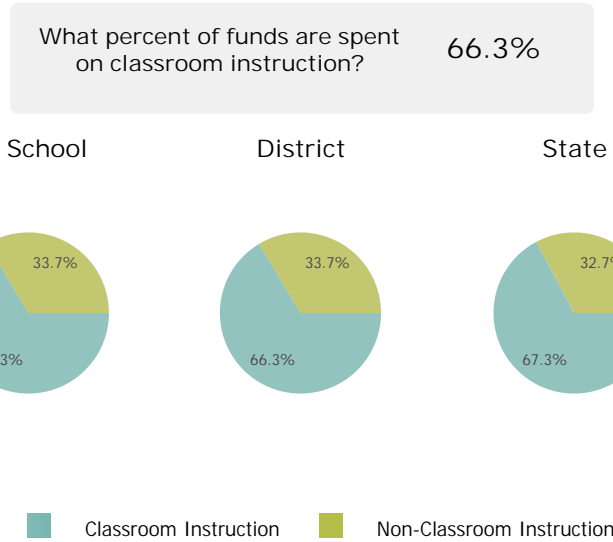
Moderate Success

Financial Data



These measures answer several questions about spending and performance. How much is spent on Classroom instruction? How much, on average, is spent on each student? What is the source of the revenue? How do these measures compare to other districts and schools?

Classroom Spending Data



Spending per Pupil Data

	School	State
Operating Spending per Pupil	\$11,554	\$9,228
Classroom Instruction	\$7,659	\$6,211
Non-Classroom Spending	\$3,895	\$3,016

