

2012-2013 Report Card for Gardiner Early Learning Center

SCHOOL GRADE

Coming in
2015



Achievement

This grade combines two results for students who took the state tests. The first result answers the question – How many students passed the state test? The second result answers the question – How well did students do on the state test?

Performance Index	
NR	N
Indicators Met	R
100.0%	N
	R

COMPONENT GRADE

Coming in
2015



Progress

This is your district's average progress for its students in math and reading, grades 4-8. It looks at how much each student learns in a year. Did the students get a year's worth of growth? Did they get more? Did they get less?

Value Added	
Overall	NR
Gifted	NR
Students with Disabilities	NR
Lowest 20% in Achievement	NR

COMPONENT GRADE

Coming in
2015



Gap Closing

This grade shows how well all students are doing in your district in reading, math, and graduation. It answers the question – Is every student succeeding, regardless of income, race, culture or disability?

Annual Measurable Objectives	
NR	N
	R

COMPONENT GRADE

Coming in
2015



Graduation Rate

This grade answers the question – How many ninth graders graduate in four years or five years?

Graduation Rates
This school is not evaluated for graduation rate because there are not enough students in the graduating class.

COMPONENT GRADE

Coming in
2015



K-3 Literacy

This grade answers the question – Are more students learning to read in kindergarten through third grade? The 2014 report card will report some results. The 2015 report card will display one grade for kindergarten through grade 3.

COMPONENT GRADE

Coming in
2015



Prepared for Success

This grade answers the question – Are students who graduate from our district ready for college or a career? There are six ways to show that graduates are prepared. In the 2014 school year, the report card will show results for the six areas. The 2015 report card will display one grade combining the results of all six ways of showing graduates are prepared.

COMPONENT GRADE

Coming in
2015

Achievement



This grade combines two results for students who took the state tests. The first result answers the question – How many students passed the state test? The second result answers the question – How well did students do on the state test?

COMPONENT GRADE

Coming in
2015

A performance index cannot be calculated for this school because there are not enough students.

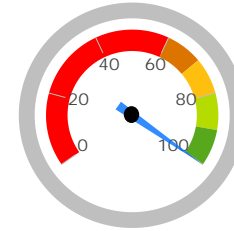
GRADE
NR

Indicators Met

Indicators Met measures how many students have passed the state tests at a minimum level, called proficient, or higher. Test results are reported for each student in a grade and subject. At least 75 percent of students must pass to get credit for the indicator. Starting in the 2013-14 school year, a district or school needs to have 80 percent of their students pass at a minimum level or higher in order to "meet" an indicator.

Indicators Met %
100.0%
0.0 out of 0.0

- A = 90.0 - 100.0%
- B = 80.0 - 89.9%
- C = 70.0 - 79.9%
- D = 50.0 - 69.9%
- F = 0.0 - 49.9%



Grades 3-5

This school does not have enough test results in 3rd, 4th, or 5th grade to display this table.

Grades 6-8

This school does not have enough test results in 6th, 7th, or 8th grade to display this table.

Ohio Graduation Test

This school does not have enough Ohio Graduation Test results to display this table.

Gifted Students



The Gifted Students data and Indicator highlight the opportunities for and performance of gifted students. The dashboard answers several questions: How many students are identified as gifted and in what categories? How many of those students are receiving gifted services? How well are those gifted students performing? The Gifted Indicator measures whether opportunity and performance expectations are being met for gifted students.

INDICATOR

Coming in
2015

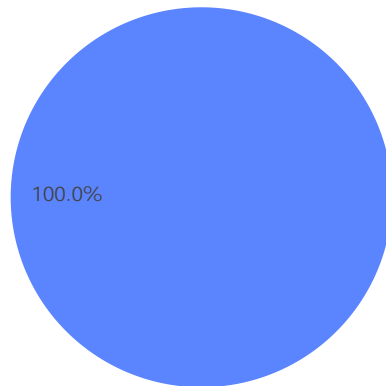
Gifted Overview

Students Identified as Gifted

0.0% of enrollment

Students Receiving Gifted Services

0.0% of enrollment



■ Identified as Gifted, Not Receiving Services
■ Receiving Gifted Services
■ Not Identified as Gifted

Achievement

The gifted data for this school cannot be displayed because there were no students identified as gifted to evaluate.

Value Added

Value Added measures the progress for all students identified as gifted in reading, math, and/or superior cognitive ability.

GRADE

NR

Progress



This is your school's average progress for its students in math and reading, grades 4-8. It looks at how much each student learns in a year. It answers the question – Did the students get a year's worth of growth? Did they get more? Did they get less?

COMPONENT GRADE

Coming in
2015

GRADE	Overall This measures the progress for all students in math and reading, grades 4-8.
NR	
GRADE	Gifted Students This measures the progress for students identified as gifted in reading, math, and/or superior cognitive ability.
NR	
GRADE	Students in the Lowest 20% in Achievement This measures the progress for students identified as the lowest 20% statewide in reading and math achievement.
NR	
GRADE	Students with Disabilities This measures the progress for students with disabilities.
NR	
GRADE	High School A High School measure of progress will be implemented in the 2015-16 school year.
Coming in 2016	

Progress Details

Value Added Data is not available for this school

Gap Closing



This grade shows how well all students are doing in your district in reading, math, and graduation. It answers the question – Is every student succeeding, regardless of income, race, culture or disability?

COMPONENT GRADE
Coming in
2015

GRADE

NR

Annual Measurable Objectives

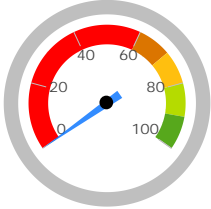
Annual Measurable Objectives (AMOs) compare the performance of all students to a state goal which is displayed as the red line in the following charts. These charts show how well each group achieves that goal in reading, math and graduation – and emphasize any achievement gaps that exist between groups. The ultimate goal is for all groups to achieve at high levels.

Reading

Math

Graduation Rate

AMO Points



This school does not have an Annual Measurable Objective for Reading because there were not enough students to evaluate.

This school does not have an Annual Measurable Objective for Math because there were not enough students to evaluate.

This school has no no Annual Measurable Objectives for Graduation Rate because there were not enough students to evaluate.

AMO Points have not been calculated and a letter grade has not been assigned because there are not enough students to calculate any of the three AMO components.

The red line on each graph identifies the Annual Measurable Objective. The 2013 AMO for Reading is 83.4%, for Math is 78.5%, and for Graduation Rate is 75.9%. Subgroups with fewer than 30 students are not rated and do not appear on the graphs.

Graduation Rate



This grade represents the percentage of students whom entered the 9th grade and graduated 4 and 5 years later.

COMPONENT GRADE

Coming in
2015

This school has not been assigned a grade for Graduation Rate because there were not enough students to evaluate.

The Graduation Rate graph that would appear in this space cannot be displayed because there were not enough students to evaluate.



Principal: --

Phone: (440) 543-2822

Address: 9421 Bainbridge Rd
Chagrin Falls OH 44023-2703

Directory information current as of the 2012-2013 Report Card publication date

Your School's Students

Average Daily Enrollment:

152

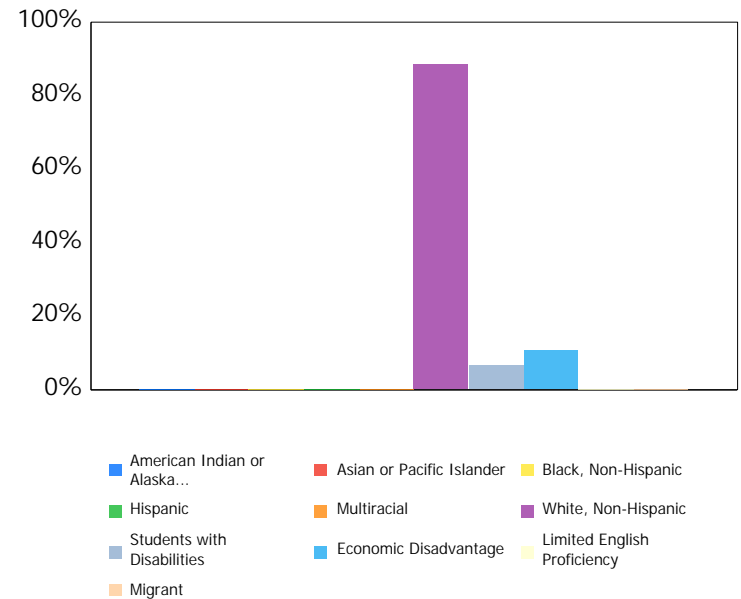
Number of Limited English Proficiency Students Excluded from Accountability Calculations:

--

Enrollment by Subgroup

	Enrollment #	Enrollment %
Am. Indian / Alaskan Native	NC	
Asian or Pacific Islander	NC	
Black, Non-Hispanic	NC	
Hispanic	NC	
Multiracial	NC	
White, Non-Hispanic	135	88.7%
Students with Disabilities	10	6.6%
Economically Disadvantaged	17	10.8%
Limited English Proficiency	NC	
Migrant	NC	

NC = Not Calculated because there are fewer than 10 in the group



Mobility Rates by Subgroup

	Student Mobility %
All Students	0.0%
Am. Indian / Alaskan Native	NC
Asian or Pacific Islander	NC
Black, Non-Hispanic	0.0%
Hispanic	NC
Multiracial	0.0%
White, Non-Hispanic	0.0%
Students with Disabilities	0.0%
Economically Disadvantaged	0.0%
Limited English Proficiency	NC
Migrant	NC

A mobility rate chart cannot be displayed for this school because either there are not enough students to evaluate in any subgroup or all calculated results are 0.0%.

NC = Not Calculated because there are fewer than 10 in the group

Your School's Teachers

Your School's Poverty Status: Low	Your School	Your District
Percentage of teachers with at least a Bachelor's Degree	100.0	--
Percentage of teachers with at least a Master's Degree	61.5	--
Percentage of core academic subject and elementary classes not taught by Highly Qualified Teachers	0	--
Percentage of core academic subject and elementary classes taught by properly certified teachers	100	--
Percentage of core academic subject elementary and secondary classes taught by teachers with temporary, conditional or long-term substitute certification/licensure	0	--

High-poverty schools are those ranked in the top quartile based on the percentage of economically disadvantaged students. Low-poverty schools are those ranked in the bottom quartile based on the percentage of economically disadvantaged students. A district may have buildings in both quartiles, in just one quartile or in neither quartile.

NC = Not Calculated because there are fewer than 10 in the group

Wellness and Physical Education

The extent to which students are successful in meeting the benchmarks contained in Ohio's physical education standards

Moderate Success

Financial Data



These measures answer several questions about spending and performance. How much is spent on Classroom instruction? How much, on average, is spent on each student? What is the source of the revenue? How do these measures compare to other districts and schools?

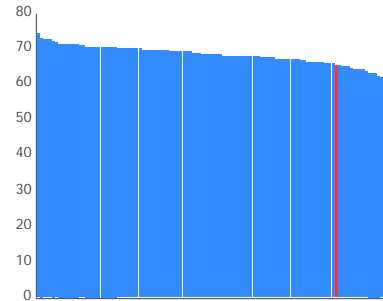
Note: Financial data is district level data. The data on this page is for Kenston Local, not just Gardiner Early Learning Center.

Comparison Group: Enrollment between 2500 and 4999

Classroom Spending Data

Percentage Spent on Classroom Instruction
65.5%

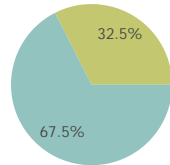
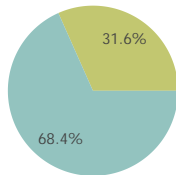
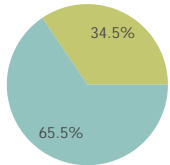
Rank in comparison group for highest % spent
96 out of 112



District

Comparison Group

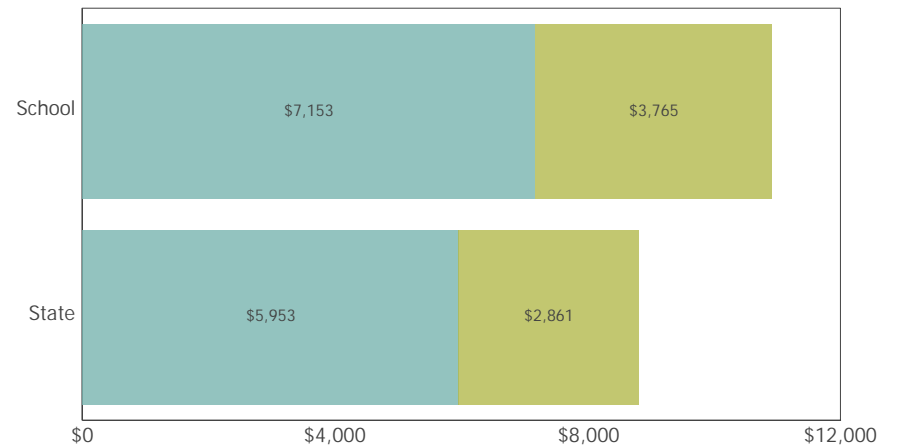
State



■ Classroom Instruction ■ Non-Classroom Instruction

Spending per Pupil Data

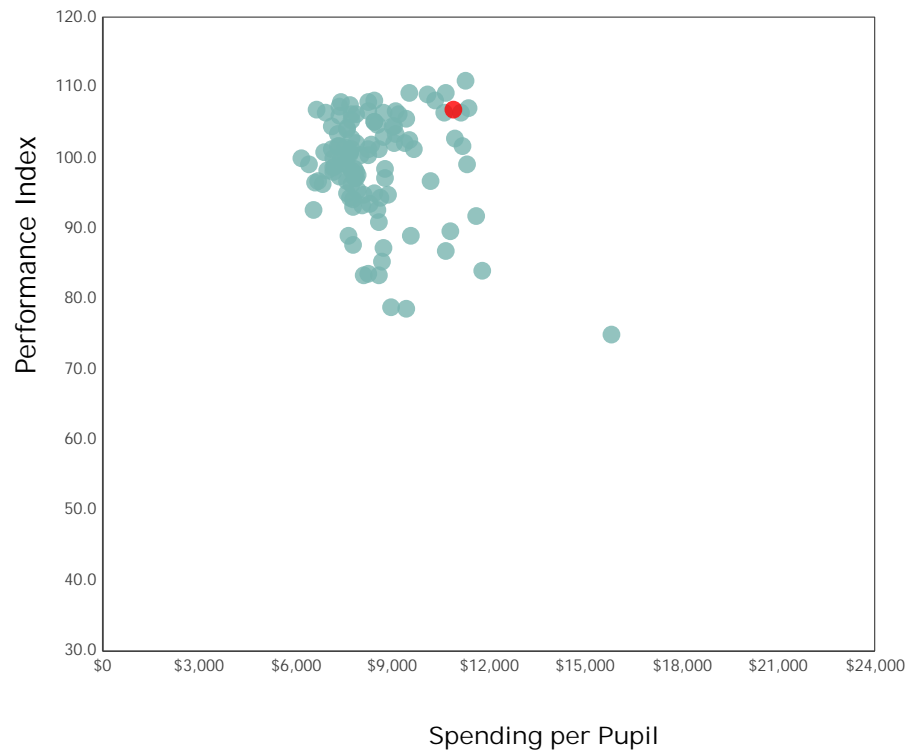
	District	State
Operating Spending per Pupil	\$10,917	\$8,814
Classroom Instruction	\$7,153	\$5,953
Non-Classroom Spending	\$3,765	\$2,861



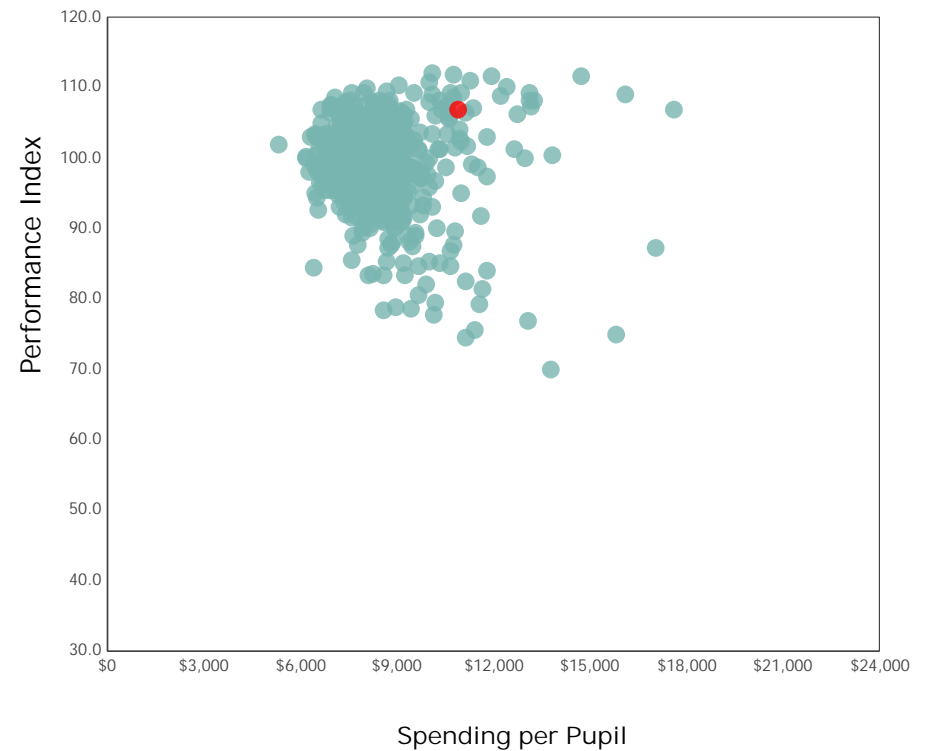
Spending and Performance

This measure answers the question – what is the relationship of average spending per student to performance, and how does that compare to similar districts and schools?

Comparison Group



All Public Districts



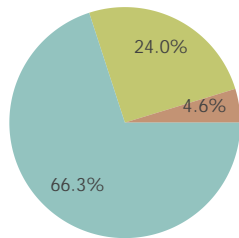
✓ Kenston Local IS among the 20% of traditional public districts with the highest academic performance index scores.

✗ Kenston Local IS NOT among the 20% of traditional public districts with the lowest operating expenditures per pupil.

Source of Revenue

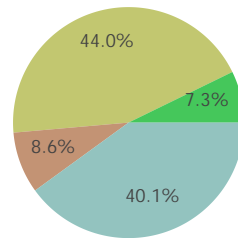
Source of Funds	District		State Total	
Local	\$24,522,502	66.3%	\$7,953,216,862	40.1%
State	\$8,892,409	24.0%	\$8,725,275,316	44.0%
Federal	\$1,707,005	4.6%	\$1,701,436,355	8.6%
Other Non-Tax	\$0	0.0%	\$1,442,122,710	7.3%
Total	\$35,121,916	100.0%	\$19,822,051,242	100.0%

District



Local State
Federal Other Non-Tax

State



Local Federal
State Other Non-Tax